

# State of Wyoming Corner Record

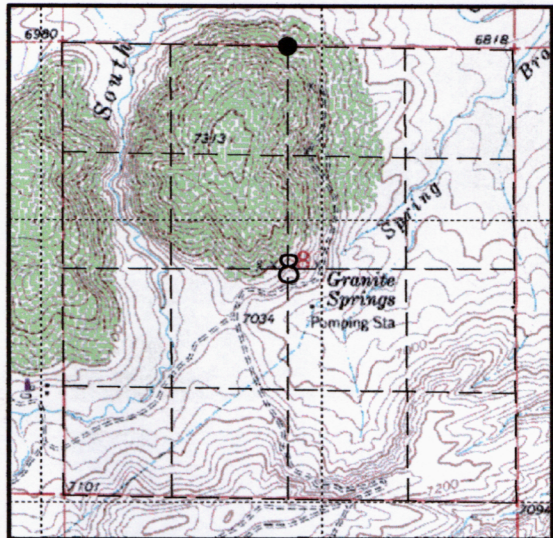
(In compliance with the CORNER PERPETUATION AND FILING ACT, Wyoming Statutes, 1997 Section 33-29-140 et. seq., and the Rules and Regulations of the Board of Professional Engineers and Professional Land Surveyors)

Reverse side of this form may be used if more space is needed.

Record of original survey and citation of source of historical information (if corner is lost or obliterated). Description of corner monumentation evidence found and/or monument and accessories established to perpetuate the location of this corner. Sketch of relative location of monument, accessories, and reference points with course and distance to adjacent corner(s) (if determined in this survey). Method and rationale for reestablishment of lost or obliterated corner.

RECORD: Granite Boulder 20"x12"x5" - No Marks Noted  
 FOUND: Unmarked stone with mound of rocks in fenceline  
 SET: 2 Witness corners in fenceline S 89°16'44"W- 18.2' and S 89°48'35"E - 14.6' of found stone

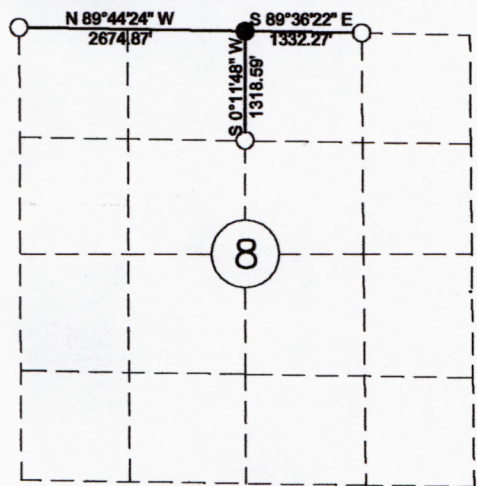
Additional Photos on Reverse



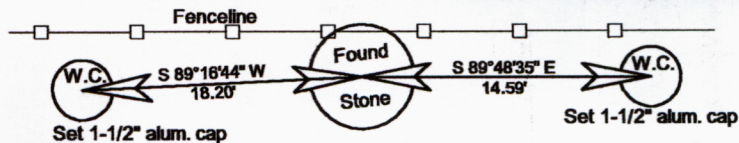
Found Stone



East Witness Corner



● = MONUMENT THIS RECORD  
**Monument Location**



**Monument Details** N.T.S.

Date of Field Work: 4-15 & 8-15-03 Office Reference: AMARMA0301.00

### Cross Index Plat

	1	2	3	4	5	6	7	8	9	10	11	12	13	14	15	16	17	18	19	20	21	22	23	24	25	
A																										
B																										
C			6		5		4		3		2		1													
D																										
E																										
F																										
G			7		8		9		10		11		12													
H																										
J																										
K																										
L			18		17		16		15		14		13													
M																										
N																										
O																										
P			19		20		21		22		23		24													
Q																										
R																										
S																										
T			30		29		28		27		26		25													
U																										
V																										
W																										
X			31		32		33		34		35		36													
Y																										
Z																										
	1	2	3	4	5	6	7	8	9	10	11	12	13	14	15	16	17	18	19	20	21	22	23	24	25	

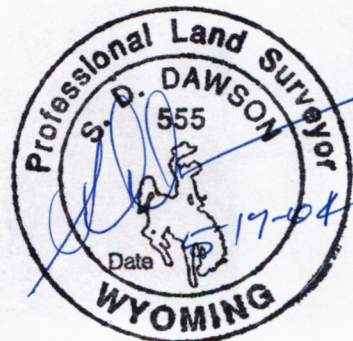
Firm/Agency, Address

SEH Inc.  
 7000 Yellowtail Rd  
 Cheyenne, Wy 82001

Telephone Number: 307-633-6440

This corner record was prepared by me or under my direction and supervision.

**SEAL & SIGNATURE**



Corner Name N 1/4 Section 8 Section 8, T 13 N, R 69 W, 6th P.M. Cross-Index No.: E-7

County: Laramie Wyoming

SBRPEPLS/PLSW: March 1994; PLSW January 1998



View West



View South

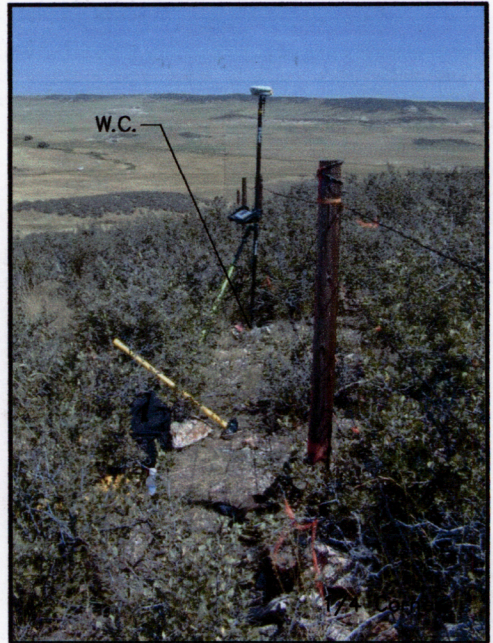


View East



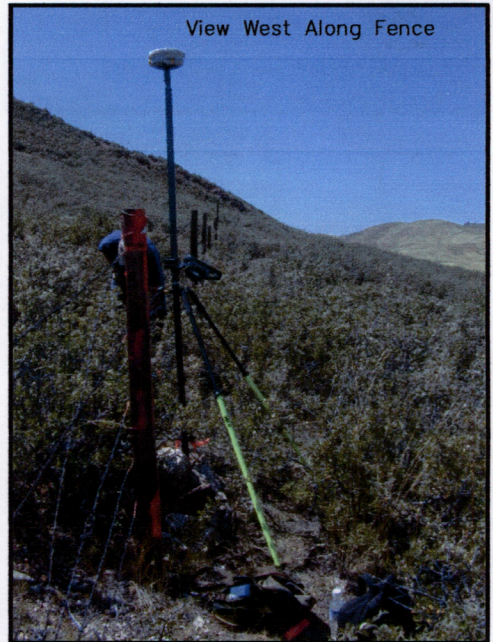
View North

View East

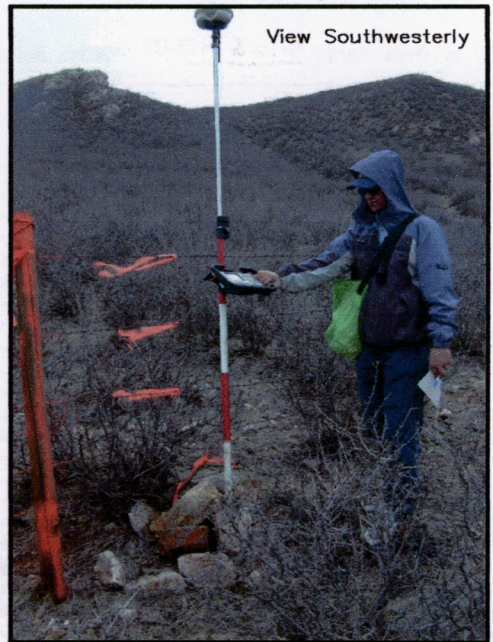


W.C.

View West Along Fence



View Southwesterly



Corner Name  N 1/4 Section 8  Section  8 , T  13 N , R  69 W , 6th P.M. Cross-Index No.:  E-7   
 County:  Laramie  Wyoming  
 SBRPEPLS/PLSW: March 1994; PLSW January 1998